



CAM FOUNDED IN 1949 HAS BEEN THE FIRST ITALIAN DESIGNER OF AUTOMATIC MACHINES FOR PACKAGING INTO CARTONS

PR model CAM cartoner on display at the "Patrimonio Industriale" museum of Bologna



Year of construction:  
1960-61

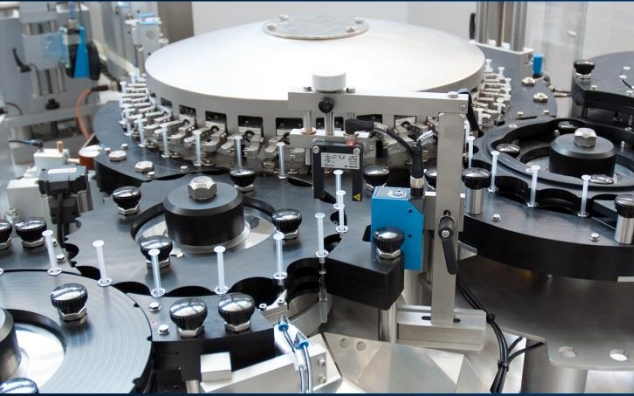
Designer:  
**Antonio Martelli**

Hourly rate of production:  
4000-6000 pieces

Automatic machine for  
cartons



CAM CAN NOW SUPPLY COMPLETE PACKAGING LINES FOR ALL TYPES OF PRODUCTS, LIQUID OR SOLID, POWDERS, GRANULATES OR CREAM, WITH STANDARD OR SPECIAL SHAPED PACKS





## 11 MANUFACTURER PREMISES SPECIALIZED IN DIFFERENT PACKAGING TECHNOLOGIES







14 AFTER SALES CENTERS AND MORE THAN 50 SPECIALISED TECHNICIANS  
BASED ALL AROUND THE WORLD AVAILABLE SOLELY FOR IMMEDIATE AFTER-  
SALES ASSISTANCE





# STRIP PACKAGING MACHINES



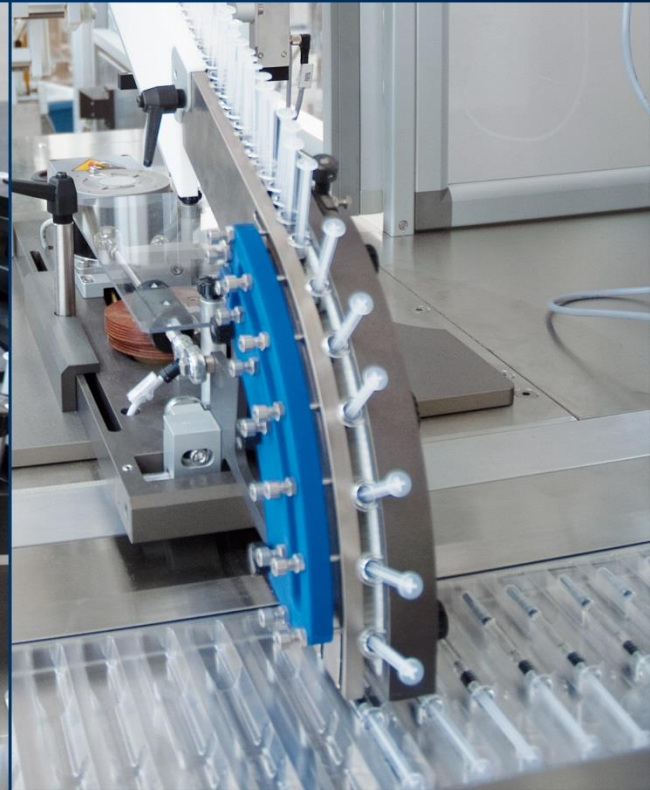


## VERTICAL, FOUR-SIDE SEALING/POUCHING MACHINES, DESIGNED FOR PACKING TABLETS, CAPSULES AND EFFERVESCENT TABLETS

- Machine speed up to 300 cycles/min for up to 12 product rows.
- Suitable for all heat-sealable films such as cellophane, aluminum, coated paper and laminates, plus all combinations of these materials.
- Designed and built in compliance with GMP regulations.
- Cantilever structure for complete and easy accessibility to all machine parts.
- Easy and quick change over
- Compact design and complete machine accessibility
- Surface finish in accordance with pharmaceutical requirements



# SYRINGE ASSEMBLY MACHINES





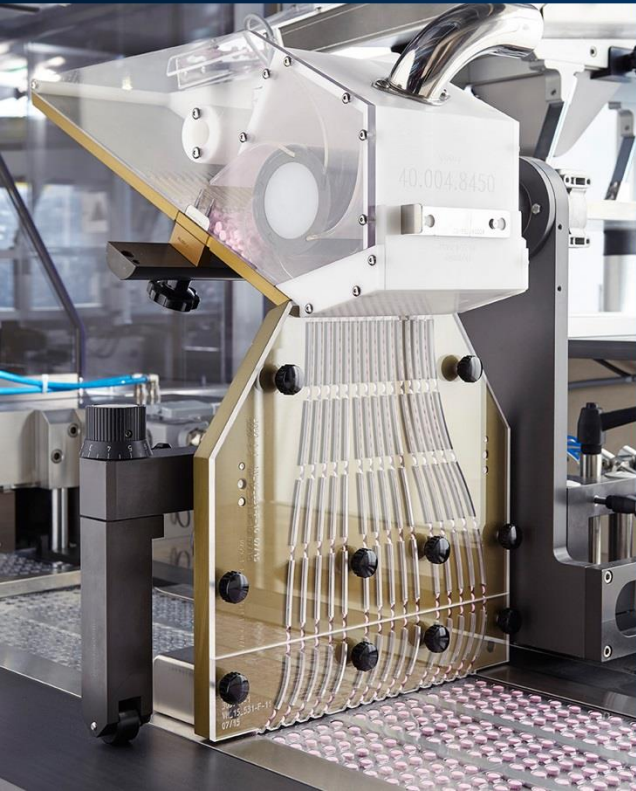


## PLUNGER/BARREL ASSEMBLY, SYRINGE LABELLING, BACKSTOP OR SAFETY APPLICATION AND SAFETY LABELLING

- Production speed up to 400 syringes per minute
- User friendly
- Full access to the entire machine
- Easy integration in a production line
- Good washability
- Same syringe height during the complete machine cycle (the syringes don't move upwards or downwards)
- Syringe positive transfer with counter rotating bars to guarantee product integrity



## THERMOFORMING MACHINES FOR BLISTER AND TRAY





## HIGH SPEED THERMOFORMING MACHINES WITH PLATE SEALING

- Balcony structure
- Compact footprint
- User friendly
- Fast and intuitive format change-over
- Easy cleaning and inspection in compliance with GMP regulations
- Wide range of foil available, including alupaper and paper
- Uniform sealing pressure on the whole blister surface
- High pressure load



# FILLING AND CAPPING MACHINES FOR BOTTLES AND JARS





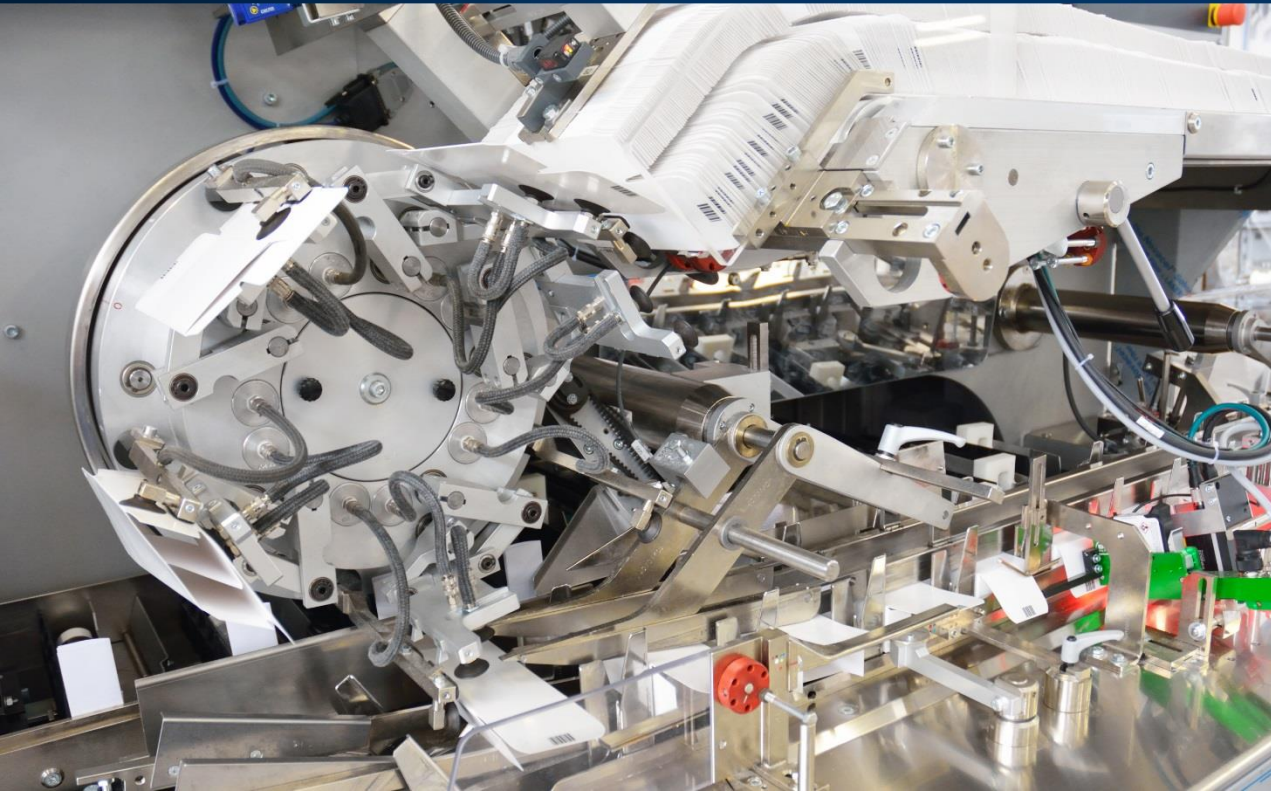
## FILLING AND CAPPING MACHINES FOR LIQUIDS, CREAMS, POWDERS AND GRANULATES

A machine range that meets all the customers requirements in term of production speed (thanks to alternate or continuous motion machines), low or high density products, bottle size and shape, type of caps commonly used for bottles/jars: press-on caps, screw on caps, caps with short and long cannulae, metal caps, and dosing/protection cups

- Designed in accordance with GMP standards
- Ease of maintenance
- Quickness of format change-over
- Ease of inspection and cleaning
- Capping heads are powered by a servomotor that electronically controls the rotation speed and the closure torque



# TRAY-FORMING AND CARTONING MACHINES





## COMPLETE RANGE OF CARTONING MACHINES WITH PRODUCTION SPEED UP TO 1000 CARTONS/1'

- Complete range of automatic feeders, either mechanically or electronically controlled
- Positive carton opening system
- Automatic feeders for leaflets and booklets
- Wide range of automatic feeders for special components in multiple packaging
- The mechanical memory system eliminates the need for fine-tuning adjustments and allows size change-over in a few minutes
- The patented carton closure system grants the possibility to carry out the format change-over in a few minutes



# WRAPPING AND BUNDLING MACHINES





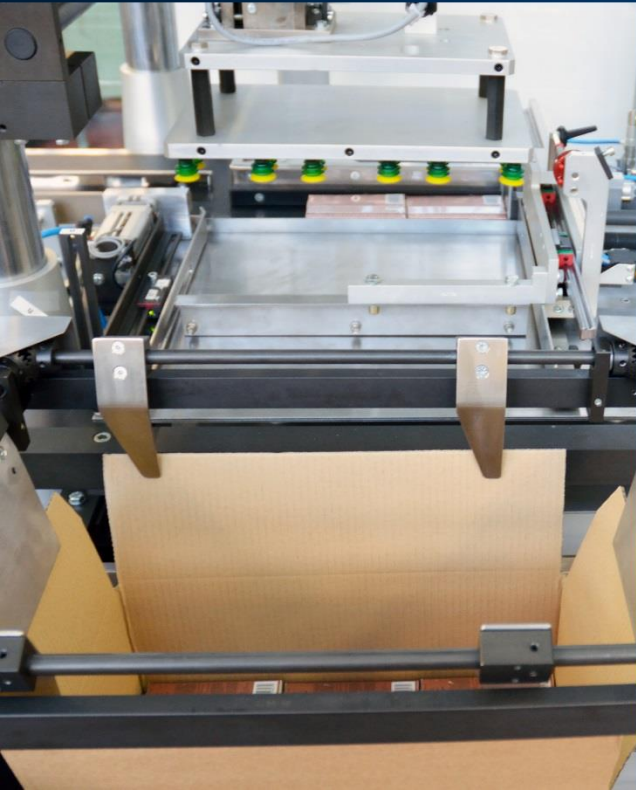


## BUNDLING AND OVERWRAPPING MACHINES WITH FILM HEAT SHRINKING OR PLATE/BELT SEALING

- For single or multiple product configuration, with also product stacking
- Complete overwrapping with plate or belt sealing, stretch-banding or shrink-wrapping
- For any kind of product, cartons, trays, bottles, jars, cans...
- CAM overwrapping machines can also be fitted with the following optional devices:
  - electronic quick format changeover system
  - tear-tape application
  - printer for variable production data
  - device for automatic splicing of wrapping material
  - bypass for alternative conveying of products not to be wrapped



## CASE-PACKING AND PALLETIZING MACHINES



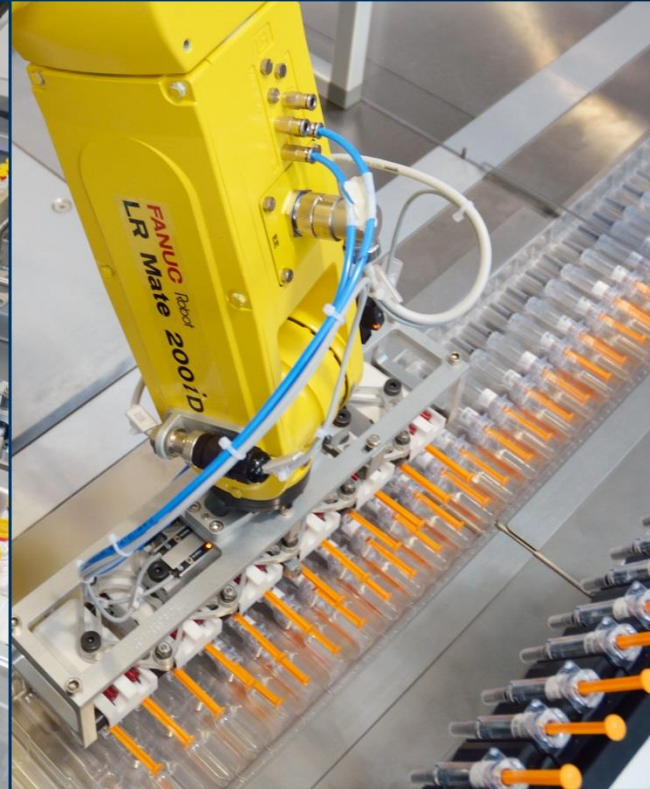


## END OF LINE MACHINES

- Vertical or horizontal case packing
- Case closure can be done using adhesive tape, gummed paper or by the application of hot-melt glue or vinyl
- Thanks to Mechanical memory the format changeover can be carried out in a matter of minutes even by unskilled personnel and without the need for special tools.
- single or multiple suction-cup or clamp grasping systems
- the machine, in its standard version, can stack products up to a height of 1800 mm (pallet excluded)
- the operator panel may be interfaced with an external PC in order to carry out automatic configuration of product formats

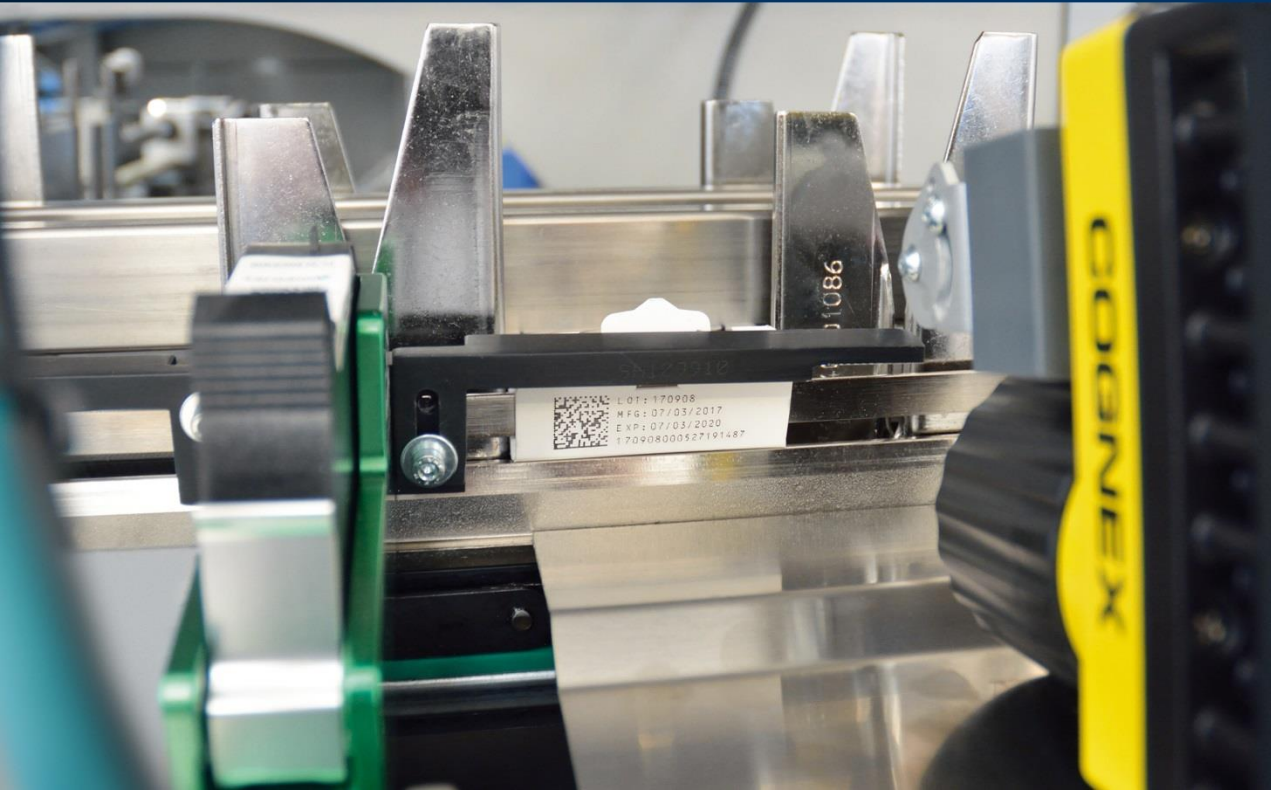


COMPLETE RANGE OF AUTOMATIC FEEDERS, EITHER MECHANICALLY OR ELECTRONICALLY CONTROLLED





# TRACEABILITY SOLUTIONS FOR THE COMPLETE PACKAGING PROCESS





## CAM TRACEABILITY SOLUTIONS FOR THE COMPLETE PACKAGING PROCESS

- Maximum flexibility and complete access to the data
- Wide range of serialization and aggregation solutions, from the individual machine to the complete line
- Wide range of printing systems: ink-jet, laser or thermal transfer for printing any kind of code directly on the packaging or by label applicaiton
- Tamper evident protection guaranteed by glue or label, or directly on the carton closing system
- Data recorded and supplied to the customer in an open format allowing thus a complete access also when the line is in operation



# TRACKING CODE SERIALIZATION, APPLICATION AND READING MACHINES





## TRACKING CODE SERIALIZATION, APPLICATION AND READING MACHINES

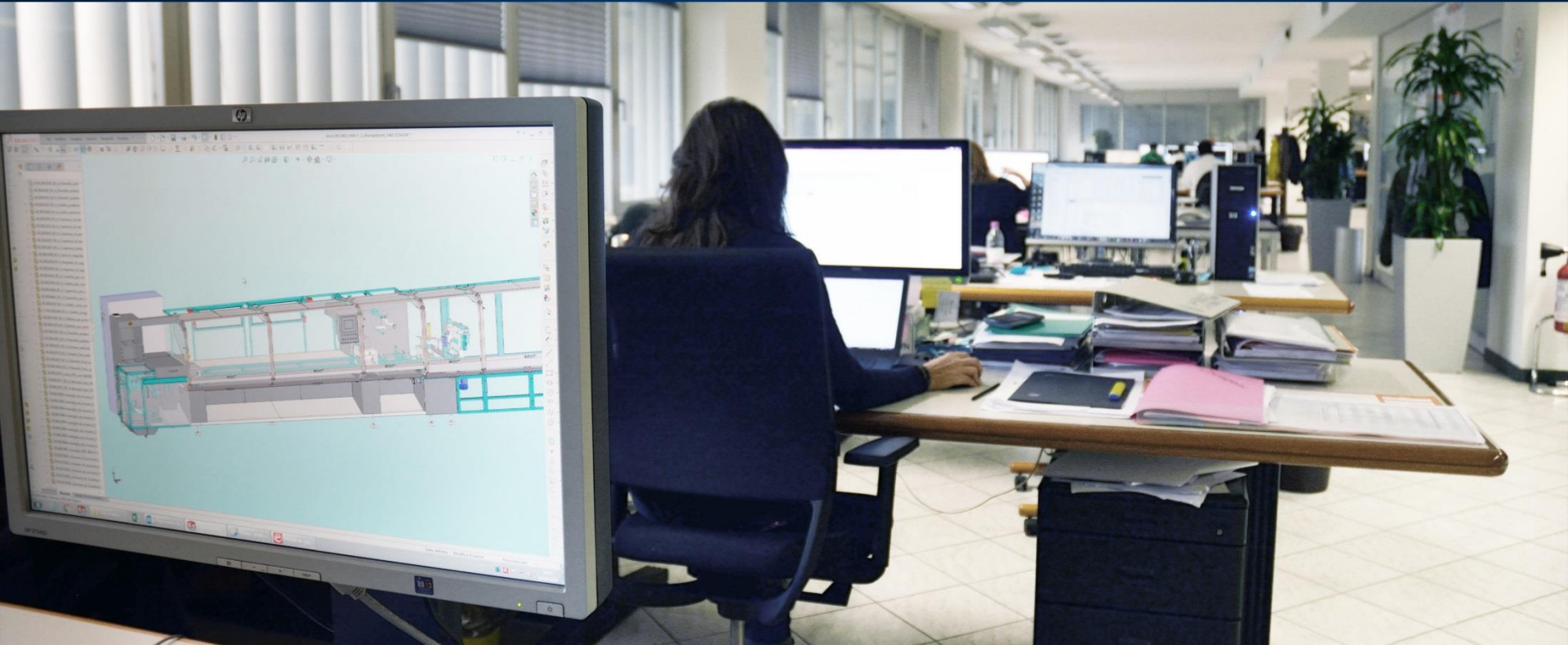
Mechanical speed up to 350 strokes

- GMP compliance, Balcony design and carton “positive” transport system
- Easy and quick format change over
- Maximum flexibility for printing any 2-D codes
- Labelling device or Print and Apply device on carton body
- Camera control system (OCR/OCV) for every code or label applied
- “Tamper Evident” application device available
- Reject station and reject verification, with the possibility of up to 3 differentiated rejects
- Easy to operate, unique HMI controlling all devices installed
- Compact overall dimensions.





COMPLETE MACHINES DESIGN AND MANUFACTURING



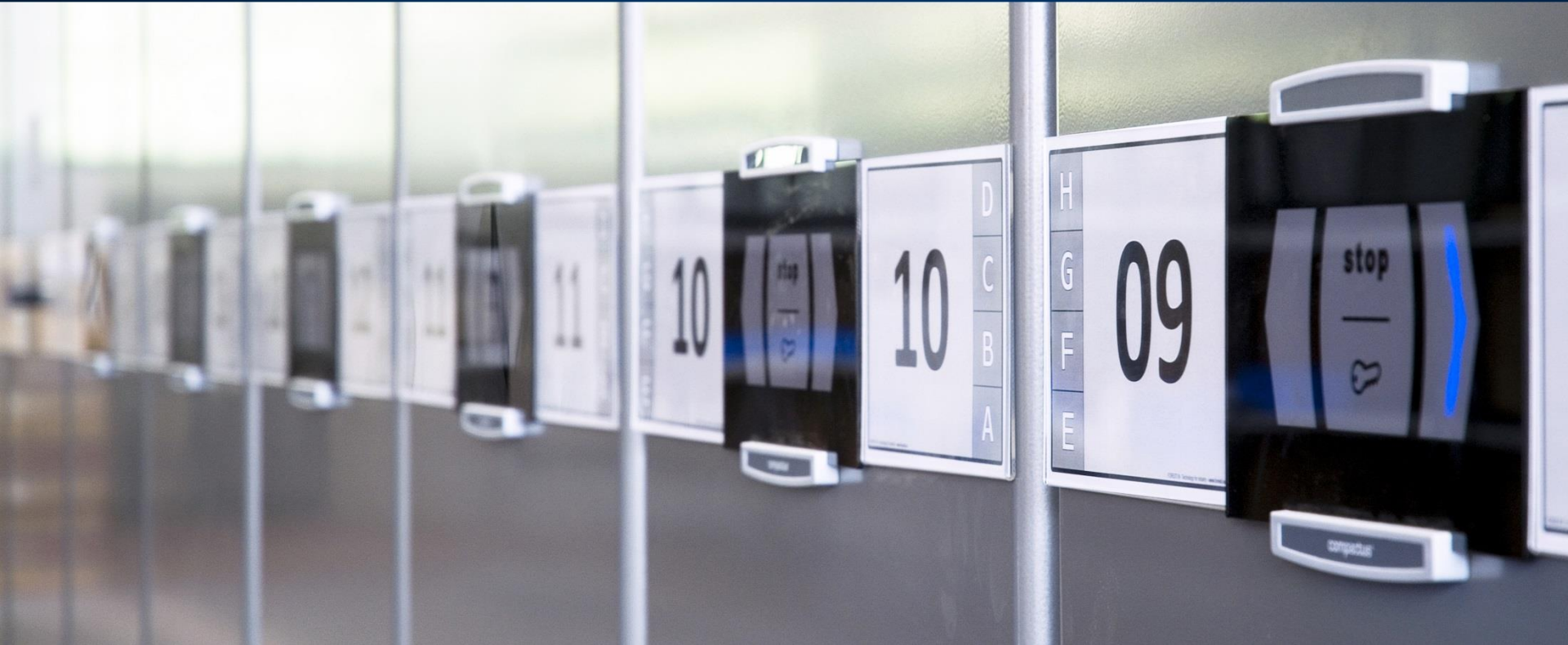


# MACHINE ASSEMBLY IN SERIES





OVER 15,000 PARTS AVAILABLE FOR IMMEDIATE DELIVERY





SINCE 1949 MORE THAN 20,000 MACHINES AND LINES INSTALLED WORLDWIDE

ALWAYS BY YOUR SIDE